

MAYFIELD
SEOUL

MAYFIELD HOTEL SEOUL

AWAKEN TO NATURE IN BUSTLING SEOUL



INFORMATION

위치	서울시 강서구 방화대로 94
건물규모	본관(클래식) 지상 6층 별관(빌라) 지하 1층, 지상 3층 부지 3만 여평
객실	239실(본관 182실, 별관 57실)
다이닝	낙원, 봉래헌, 캐슬테라스, 더 큐, 로얄마일, 델리스, 라셰즈(외부)
연회장	11개(대연회장 1, 중연회장 3, 소연회장 4, 야외 4)
주차공간	527대(P1 374대, P2 57대, P3 96대)
부대시설	체력장, 수영장, 사우나, 스파, 필라테스, 골프연습장, 파3 골프, 짐맥클린 골프 스쿨
기타시설	비즈니스센터, 컨퍼런스 룸, 산책로

Location	94 Banghwa-daero, Gangseo-gu, Seoul, Korea
Property Brief	Main(Classic) Building : 6 stories above ground Annex(Villa) Building : 3 stories above ground and 1 below Land Area: 25 acres
No. of Guest Rooms	239(Classic : 182, Annex : 57)
Restaurants	Nakwon(Korean BBQ), Bongraecheon(Royal Korean Cuisine), Castle Terrace(International Buffet), The KEW(European Cuisine), Royal Mile(Lounge Café), Delice(Bakery) Rachez(American Bistro & Bar) *Off-Site Restaurant
Banquet Halls	11 Banquet Halls (1 Grand Ballroom, 3 Medium & 4 Small Rooms, 4 Outdoor Venues)
Parking Zone	3 zones, 527 vehicles(P1-374, P2-57, P3-96)
Leisure Facilities	Gym, Swimming Pool, Sauna, Spa, Pilates, Driving Range, Par 3 Golf, Jim Mclean Golf School
Other Facilities	Business Center, Conference Room, Walking Trail



LOCATION



BUS STOP

A 3, 12, 50, 71
대한항공훈련센터 하차
Korean Air Training Center

B 3, 12, 50, 50-1
대한항공빌딩 하차
Korean Air Building

C 651, 6628, 6632, 6642, 6647, 6014
강서면허시험장, 메이필드호텔 하차
Gangseo Driver's License Examination Office, Mayfield Hotel

D 650, 651, 653, 6628, 662, 6630
강서면허시험장, 메이필드호텔 하차
Gangseo Driver's License Examination Office, Mayfield Hotel

SUBWAY

5 LINE #5 **AREX** **SEOHAE LINE**
9 LINE #9 **GIMPO GOLDLINE**

ADDRESS

(07506)서울특별시 강서구 방화대로 94
메이필드호텔 서울
Mayfield Hotel, 94, Banghwa-daero,
Gangseo-gu, Seoul, Republic of Korea

* 김포공항 또는 마곡역에서 차로 5분 소요
* 5 minutes by car from Gimpo Airport and
Magok Station.

INQUIRY

T. +82.2.2660.9000
F. +82.2.2660.9117
E-MAIL. mayres@mayfield.co.kr

버스 안내 BUS STOP

대한항공, 대한항공빌딩 하차
Korean Air
BUS No.: 3, 12, 50, 50-1, 71

강서면허시험장, 메이필드호텔 앞 하차
Gangseo Driver's License Examination
Office, Mayfield Hotel Entrance
BUS No.: 651, 650, 653, 6632, 6642

인천공항 리무진 AIRPORT LIMOUSINE

강서면허시험장, 메이필드호텔 하차
BUS No.: 6014

셔틀버스 SHUTTLE BUS

김포공항 국제선 : 1층 2번 승차장
Gimpo Airport Int'l Terminal : 1F-Bus Stop 2

김포공항 국내선 : 1층 7번 승차장
Gimpo Airport Domestic Terminal : 1F-Bus Stop 7

마곡역 : 5번 출구
Magok Station : Exit 5

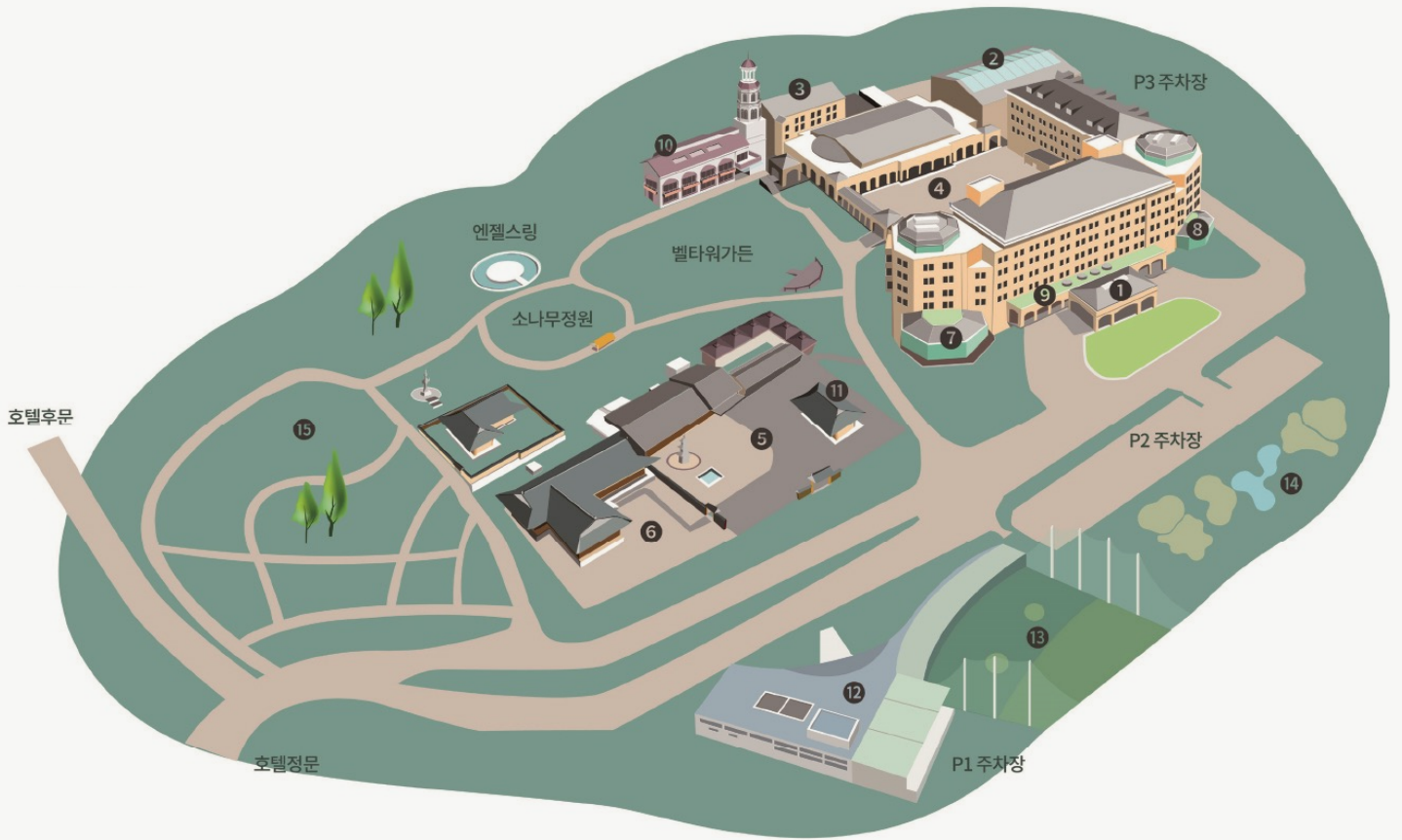
마곡나루역 : 5번출구
Magoknaru Station : Exit 5

호텔 : 본관 앞 셔틀버스 정류장
Hotel : Main Building Shuttle Bus Stop

약 10분소요(호텔-김포공항)
10 minutes(Hotel-Gimpo Airport)

MAYFIELD HOTEL	Lotte Mall Gimpo Airport	Gimpo Airport Int'l Terminal 1F	Gimpo Airport Domestic Terminal 1F	MAYFIELD HOTEL	Magok Sta. (line 5)	Magongnaru Sta. (line 9, Arex)	MAYFIELD HOTEL
11:00	11:07	11:10	11:15	11:30	11:40	11:45	11:55
12:00	12:07	12:10	12:15	12:30	12:40	12:45	12:55
13:00	13:07	13:10	13:15	13:30	13:40	13:45	13:55
14:00	14:07	14:10	14:15	14:30	14:40	14:45	14:55
15:00	15:07	15:10	15:15	15:25	-	-	-

FACILITIES



- | | |
|--------------|---------------------------|
| ① 호텔 로비 | ① Hotel Lobby |
| ② 연회 & 웨딩 | ② Banquet & Wedding |
| ③ 연회 & 웨딩 별관 | ③ Banquet & Wedding Annex |
| ④ 아트리움 | ④ Atrium |
| ⑤ 낙원 | ⑤ Nakwon |
| ⑥ 봉래헌 | ⑥ Bongraecheon |
| ⑦ 캐슬테라스 | ⑦ Castle Terrace |
| ⑧ 더 큐 | ⑧ The KEW |
| ⑨ 로얄마일 | ⑨ Royal Mile |
| ⑩ 벨타워 | ⑩ Bell Tower |
| ⑪ 초례청 | ⑪ Choryecheon |
| ⑫ 빌라 웰니스클럽 | ⑫ Villa Wellness Club |
| ⑬ 골프연습장 | ⑬ Driving Range |
| ⑭ Par 3 골프 | ⑭ Par 3 Golf |
| ⑮ 산책로 | ⑮ Walking Trail |

주차시설 | 527대

PARKING	CAPACITY
P1	374대
P2	57대
P3	96대

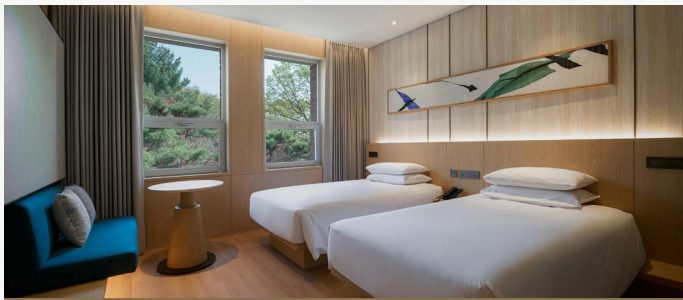
ACCOMMODATION



정원이 내려다보이는 가든뷰는 일상에 지친 피로를 풀어주고,
새벽을 깨우는 싱그러운 자연과 지저귀는 새소리는 휴식을 더욱 여유롭게 만들어 드립니다.

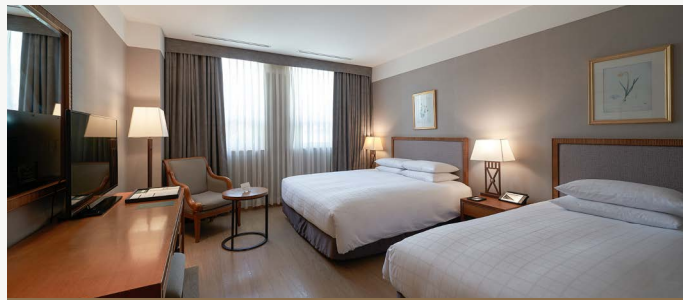
Garden view guest rooms provide a sense of relaxation
to recover from the daily life fatigue and make rest more refreshing and comfortable.

ACCOMMODATION



STANDARD

LOCATION Classic(Main)
 SIZE 31m²
 BED TYPE Double | Twin(Single+Single)
 ROOM FEATURES 1 Bedroom, 1 Bathroom



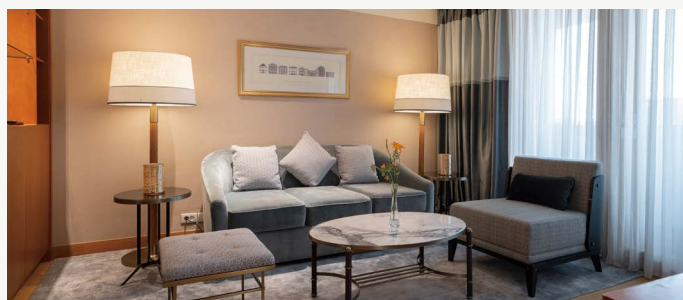
SUPERIOR

LOCATION Classic(Main)
 SIZE 36m²
 BED TYPE Double | Twin(Double+Single)
 ROOM FEATURES 1 Bedroom, 1 Bathroom



DELUXE

LOCATION Classic(Main)
 SIZE 43m²
 BED TYPE Twin(Double+Single)
 ROOM FEATURES 1 Bedroom, 1 Bathroom



EXECUTIVE SUITE

LOCATION Classic(Main)
 SIZE 60m²
 BED TYPE Double
 ROOM FEATURES 1 Living Room, 1 Bedroom, 1 Bathroom, 1 Toilet



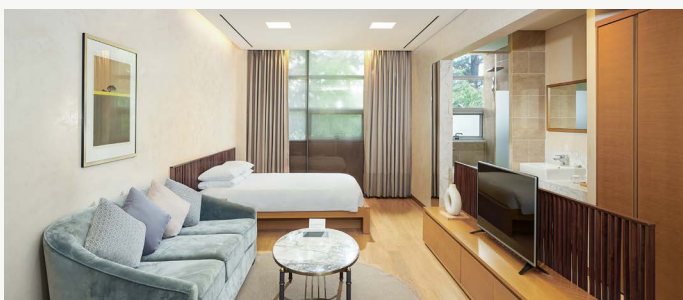
JAMES II PRESIDENT SUITE

LOCATION Classic(Main)
 SIZE 104m²
 BED TYPE 2 Double
 ROOM FEATURES 1 Living Room, 2 Bedroom, 2 Bathroom, 2 Toilet



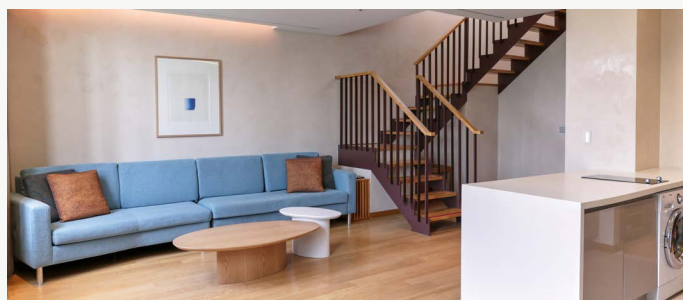
VILLA SUPERIOR

LOCATION Villa(Annex)
 SIZE 33 ~ 43m²
 BED TYPE Double
 ROOM FEATURES 1 Living Room, 1 Bedroom, 1 Bathroom



VILLA DELUXE

LOCATION Villa(Annex)
 SIZE 33 ~ 43m²
 BED TYPE Double
 ROOM FEATURES 1 Living Room, 1 Bedroom, 1 Bathroom



VILLA DUPLEX SUITE

LOCATION Villa(Annex)
 SIZE 92m²
 BED TYPE Double | Twin(Double+Single)
 ROOM FEATURES 1 Living Room, 1 Bedroom, 1 Bathroom, 1 Toilet

ROOM INFORMATION

Venue	Room Type		No.	Size	
				Pyung	m ²
Classic (Main)	Standard	Twin	35	9	31
		Double	18		
	Superior	Twin	78	11	36
		Double	34		
		Ondol	2		
	Deluxe	Twin	6	13	43
	Executive Suite	Double	6	18	60
	Business Suite	Twin	2	22	73
	James II President Suite	Double	1	31	104
Sub Total			182	-	
Villa (Annex)	Superior	Double	19	10~13	33~43
	Deluxe	Double	11	10~13	33~43
	Executive Suite	Double	7	18	60
	Family Suite	Twin	16	21~24	70~82
	Duplex Suite	Twin	3	27	92
		Double	1		
Sub Total			57	-	
Total			239	-	

| 객실정보 |

인원 추가 요금 : 44,000원

(5세 이상, VAT포함)

침구 추가 요금 : 55,000원(VAT포함)

*전객실 금연

| ROOM INFORMATION |

Additional charge for personnel :

44,000 KRW

(5 years or older, VAT included)

An extra charge for bedding :

55,000 KRW(VAT included)

*All rooms are non-smoking

객실 어메니티

객실 WIFI, 커피·녹차·홍차, 슬리퍼, 개인용 금고, 커피포트, 옷걸이, 생수(1일2병)

욕실 헤어드라이어, 면봉, 샤워캡, 핸드타월, 가운, 머리빗, 샴푸, 린스, 핸드워시, 바디워시, 바디로션

스페셜 서비스

유아용 침대 생후 6개월 이하
 장애인 전용 Check In Desk 운영
 24시간 컨시어지 서비스(프론트)
 Express Check Out
 투숙객 무료주차
 친환경 Bath Amenity 제공
 체련장 무료이용
 수영장 무료이용(1일 1회)
 사우나 40% 할인
 파3골프 10% 할인

ROOM AMENITIES

ROOM WIFI, Coffee, Green & Black tea bags, Slippers, Safe, Electric kettle, Hangers, Complimentary drinking water(2 per day)

BATH Hair dryer, Cotton swabs, Shower cap, Hand towels, Bathrobe, Comb, Shampoo, Rinse, Hand wash, Body wash, Body lotion

SPECIAL SERVICES

Complimentary cribs for babies under 6months
 Check In Desk for guests with disabilities
 24-hour concierge service(Front Desk)
 Express Check Out
 Complimentary parking for room guests
 Eco-friendly bath amenity
 Free use of GYM
 Free use of swimming pool(1 time per day)
 Sauna 40% off
 Par 3 golf 10% off

BANQUET



최신 무대 장치, 음향 및 조명시설, 넉넉한 주차공간을 갖추고 있어
각종 국제 행사 및 고객 맞춤형 웨딩 연출을 위한 최적의 조건을 제공합니다.

Magnificent and sophisticated banquet halls equipped with state-of-the-art equipment
make an impression on successful business and customized wedding.

MEETINGS & EVENTS



MAYFIELD BALLROOM

LOCATION BANQUET HALL 1F
EQUIPMENT Audio, Media Wall[LED SCREEN 11.0m(W), 4.0m(H)]

SCALE 918m²: 18m(W), 51m(L), 5.5m(H) | Stage : 3.5X11.2m
CAPACITY Banquet 500 | Class Room 500 | Theater 1,000



IRIS

LOCATION BANQUET HALL 2F
EQUIPMENT Media Wall[LED SCREEN 10.0m(W), 2.25m(H)], Audio
SCALE 352m² : 16m(W), 22m(L), 4.3m(H) | Stage : 3.5 X 11.2m
CAPACITY Banquet 200 | Class Room 140 | Theater 3



CALLA

LOCATION BANQUET HALL 3F
EQUIPMENT Pipe Organ
SCALE 352m² : 16m(W), 22m(L), 7.6m(H)
CAPACITY Minimum 100-120 guests



ORCHID

LOCATION BANQUET HALL B1
EQUIPMENT Audio, Video, Screen
SCALE 415m²: 12.4m(W), 33.5m(L), 3.2m(H) | Stage : 2.44X7.32m
CAPACITY Banquet 240 | Class Room 200 | Theater 400



LOTUS

LOCATION BANQUET HALL ANNEX 3F
EQUIPMENT Audio, Video, Screen
SCALE 137m² : 11.9m(W), 11.5m(L), 3.8m(H)
CAPACITY Banquet 60 | Class Room 60 | Theater 80

MEETINGS & EVENTS



DAISY 1 & 2

LOCATION BANQUET HALL ANNEX 2F
EQUIPMENT Audio, Video, Screen
SCALE 59.5m² : 5m(W), 11.9m(L), 2.6m(H)
CAPACITY Banquet 30 | Class Room 20 | Theater 40



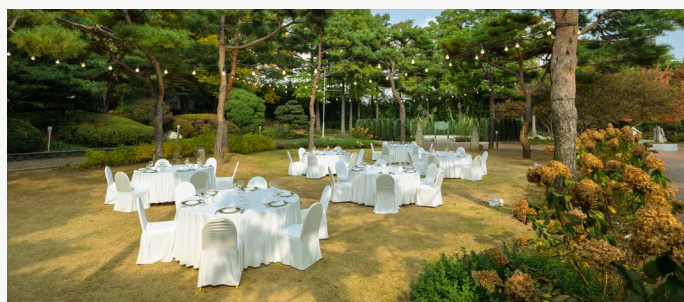
YI YUAN

LOCATION BELL TOWER 1F
EQUIPMENT Audio, Video, Screen
SCALE 195m² : 8.8m(W), 22.1m(L), 2.8m(H) | Stage: 2.44X7.32m
CAPACITY Banquet 70 | Class Room 60 | Theater 100



BELL TOWER GARDEN

LOCATION Outdoor
EQUIPMENT Audio
SCALE 2,800m²
CAPACITY Banquet 600 | Theater 1,000



PINE GARDEN

LOCATION Outdoor
EQUIPMENT Audio
SCALE 650m²
CAPACITY Banquet 100 | Theater 200



ATRIUM

LOCATION Outdoor
EQUIPMENT Audio
SCALE 960m²
CAPACITY Banquet 400 | Theater 800



ANGEL'S RING

LOCATION Outdoor
SCALE 143m²
CAPACITY Banquet 40

BANQUET INFORMATION

Halls	Location	Size				Capacity			
		Pyung	m ²	Height	Length	Wedding	Banquet	Classroom	Theater
Mayfield Ballroom	연회장 Banquet 1F	278	918	5.5	18×51	380	500	500	1,000
Iris	연회장 Banquet 2F	107	352	4.3	16×22	190	200	140	300
Calla	연회장 Banquet 3F	107	352	7.6	16×22	120	200	180	300
Orchid	연회장 Banquet B1	126	415.4	3.2	12.4×33.5	160	240	220	400
Lotus	별관 Banquet Annex 3F	59	137	3.8	11.9×11.5	60	60	60	80
Daisy	별관 Banquet Annex 2F	18	59.5	2.6	5×11.9	-	30	20	40
YI YUAN	벨타워 Bell Tower 1F	42	195	2.8	8.8×22.1	60	70	60	100
Bell Tower Garden	야외 Outdoor	847	2,800	-	-	600	600	-	1,000
Atrium	야외 Outdoor	290	960	-	-	400	400	-	800
Pine Garden	야외 Outdoor	197	650	-	-	70	100	-	200
Angel's Ring	야외 Outdoor	43	143	-	-	-	40	-	-

WELLNESS



도심 속 아름다운 자연 환경을 갖춘 메이필드호텔은 3만여 평 부지 위 드넓은 정원의 싱그러움과 사계절의 정취를 담아 자연 속에서의 진정한 휴식을 선사하기 위한 차별화된 서비스로 특별한 경험을 약속드립니다.

The Mayfield Hotel, with beautiful nature in the city of Seoul, is set on a 25-acre site, where the harmony of its European-style architecture and lush gardens provides true relaxation.

WELLNESS



체련장 | GYM



실내 수영장 | SWIMMING POOL



필라테스 | PILATES



스파 | SPA



골프연습장 | DRIVING RANGE



파3골프 | PAR 3 GOLF